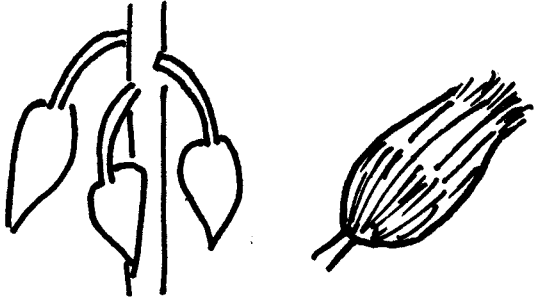


み (実)



9

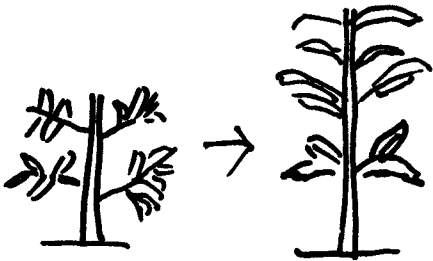
おし葉(ば)



13

せ(背)が高くなる

(植物の背がのびる)



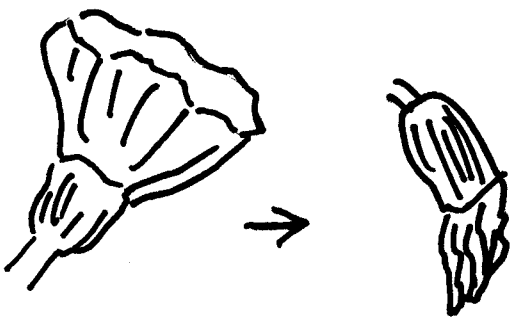
10

ホウセンカ



14

かれる(花が枯れる)



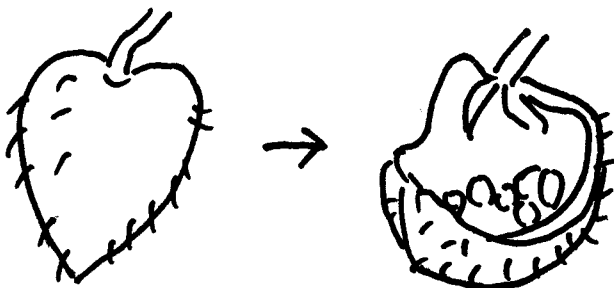
11

マリーゴールド



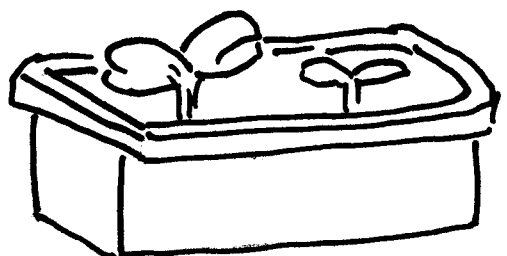
15

(実が)じゅくす



12

プランター



16

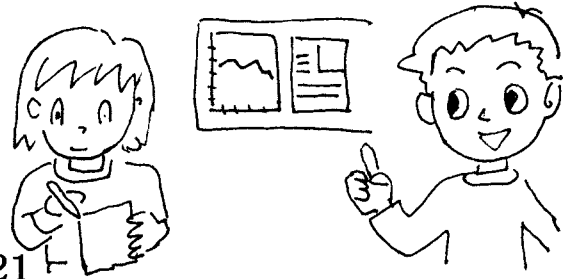
ビニルポット



17

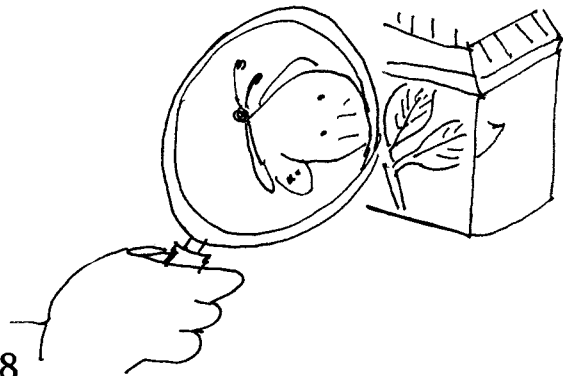
きろく (記録)

はっぴょう (発表)



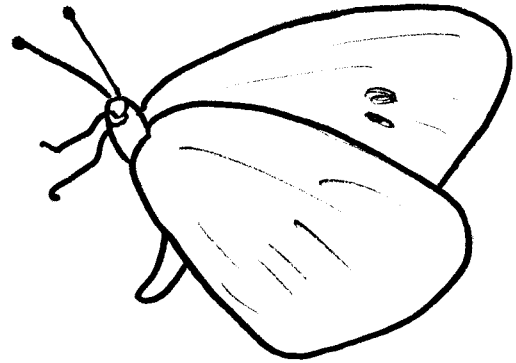
21

かんさつ (観察)



18

モンシロチョウ



22

じゅんび (準備)

19

たまご (卵)

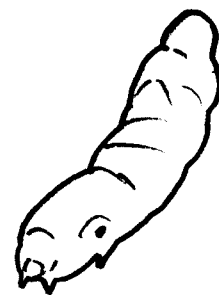


23

かつどう (活動)

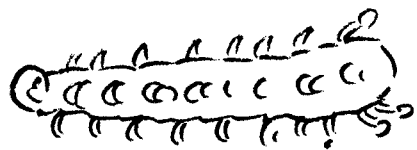
20

あおむし (青虫)



24

よう虫 ()



25

さなぎ



29

えさ

いと



26

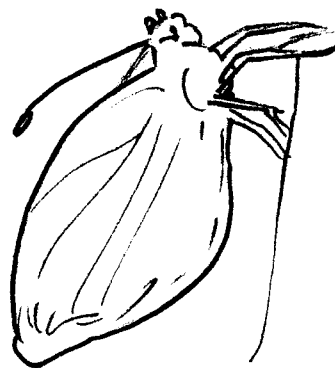
30

から



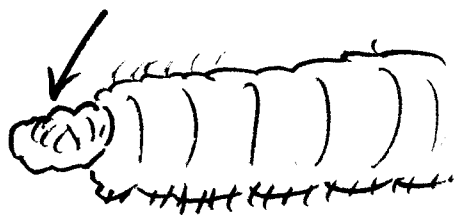
27

せいちゅう (成虫)



31

ふん



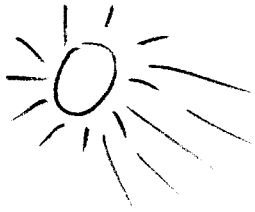
28

入れ物 (いれもの)



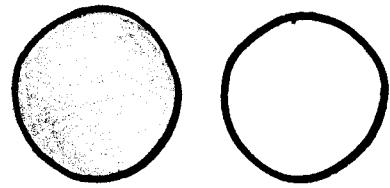
32

日光 (に...)
太陽の光(た...ひ...)



33

色 (い.)



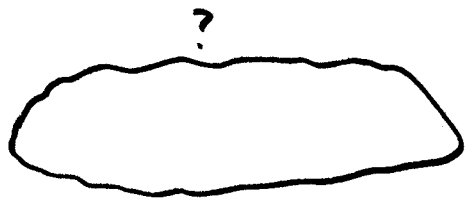
37

日光がちよくせつ
あたたら(...)ばしよ



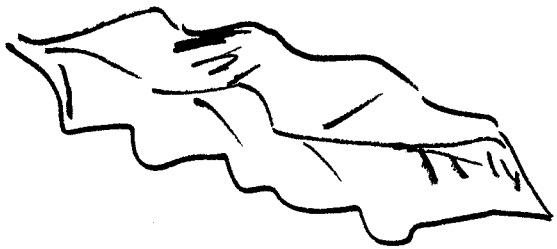
34

形 (か..)



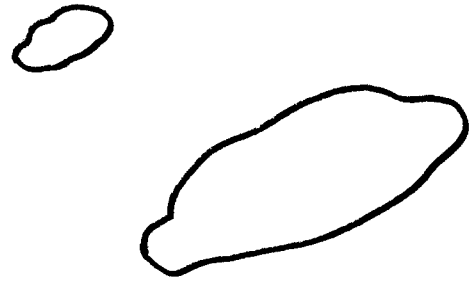
38

しおれた葉



35

大きさ (...きさ)



39

アブラナ



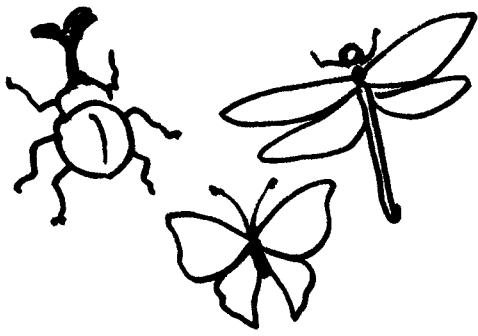
36

食べ方 (...べ...)



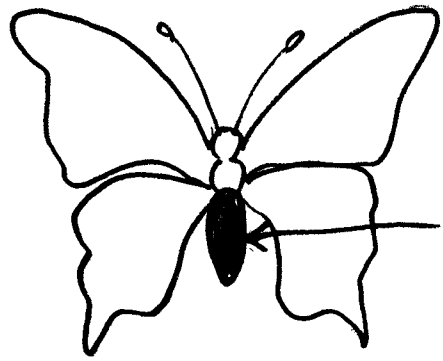
40

こん虫 (こん...)



41

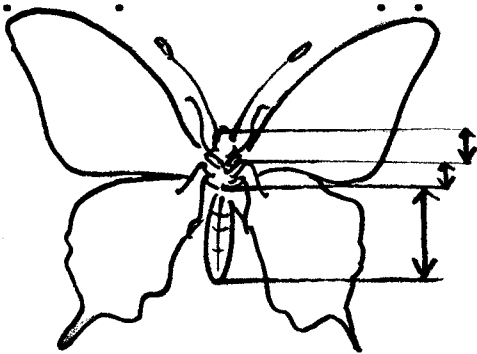
はら



45

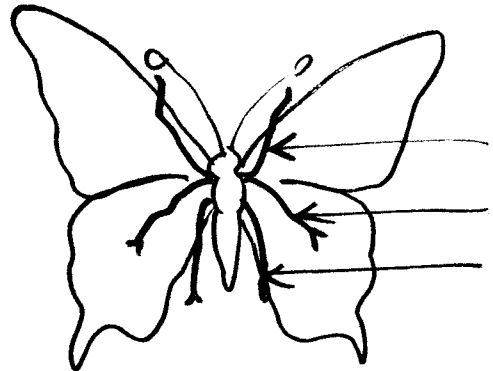
体の分かれ方

か・



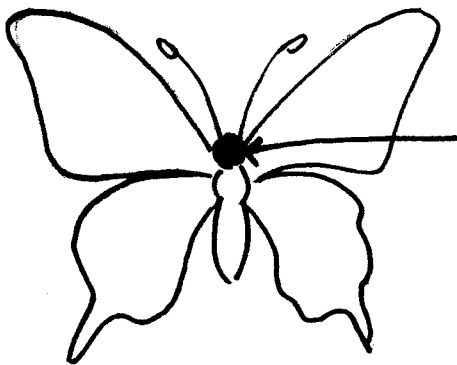
42

あし



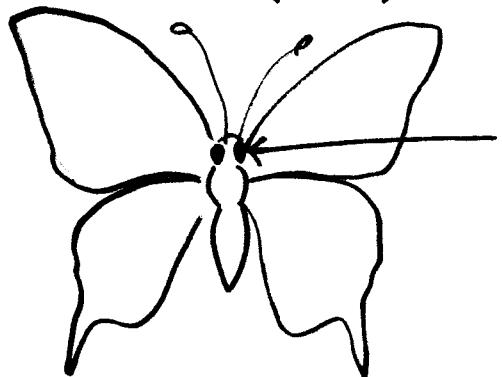
46

頭 (あ...)



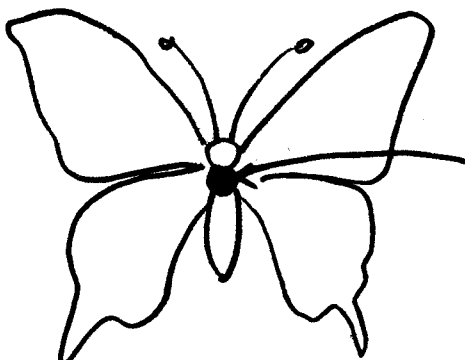
43

目 (・)



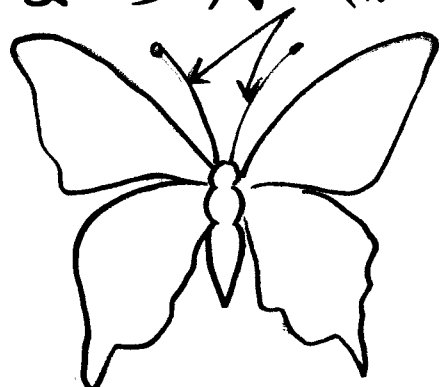
47

むね



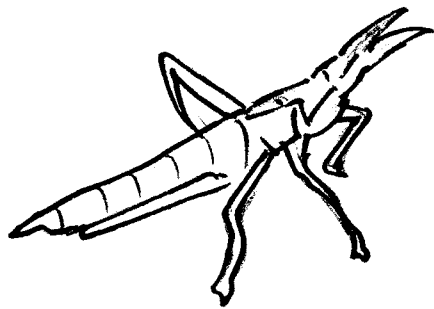
44

しよっ角 (か・)



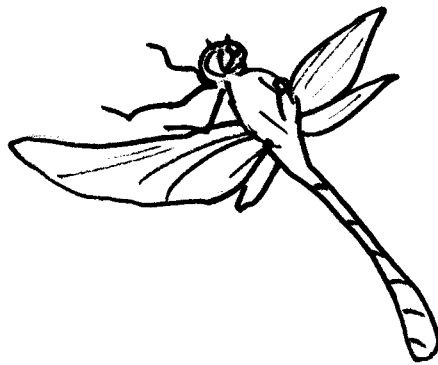
48

ショウリョウバッタ



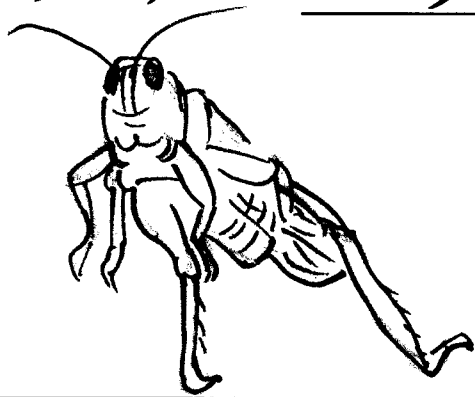
49

アキアカネ(トンボ)



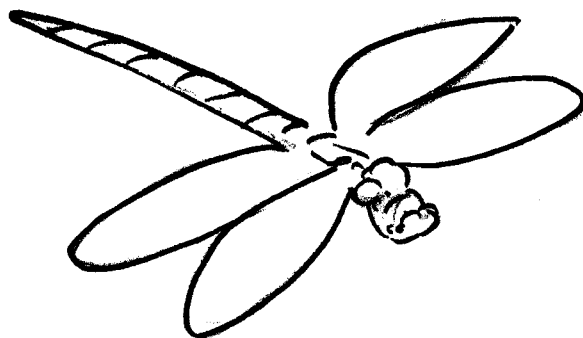
53

トノサマバッタ



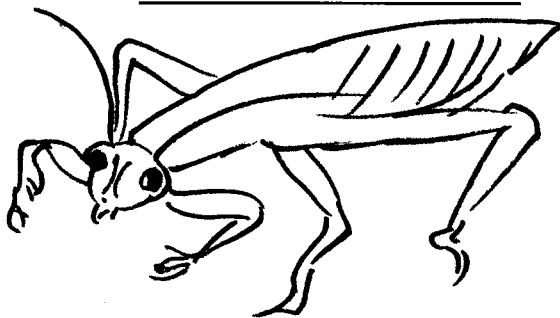
50

ギンヤンマ(トンボ)



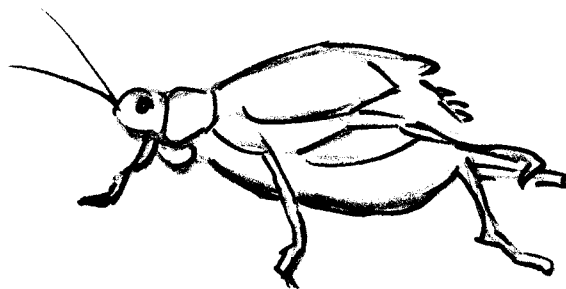
54

オオカマキリ



51

エンマコオロギ



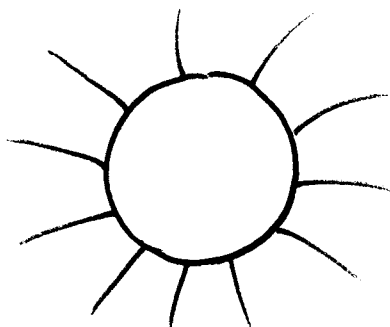
55

アブラゼミ(セミ)



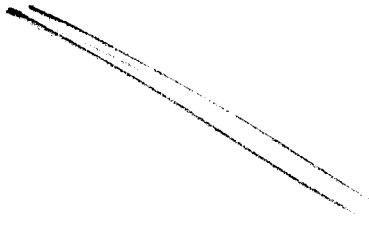
52

太陽(.....)



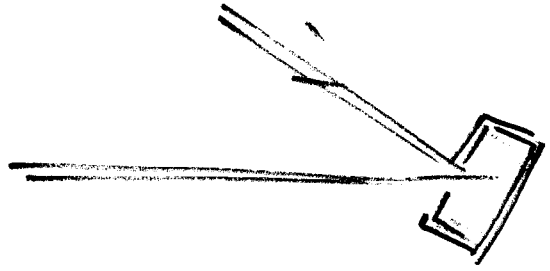
56

光 (・・・)



57

はねかえす

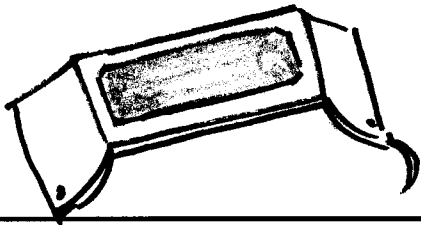


61

しゃ光(・・・)ばん

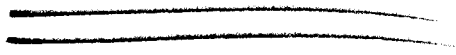
太陽をちよくせつ見ると目を(・・・)ので

光を(・・・)しゃ光ばんを使う



58

道 (・・・) すじ



62

目をいためる



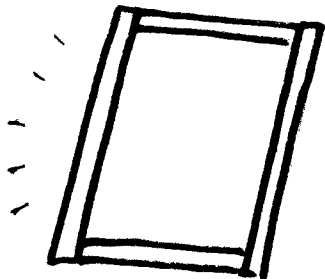
59

手 (・) をかざす



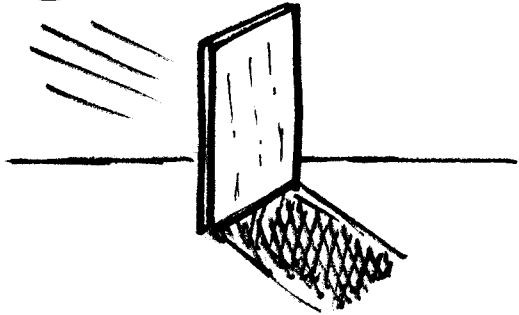
63

かがみ



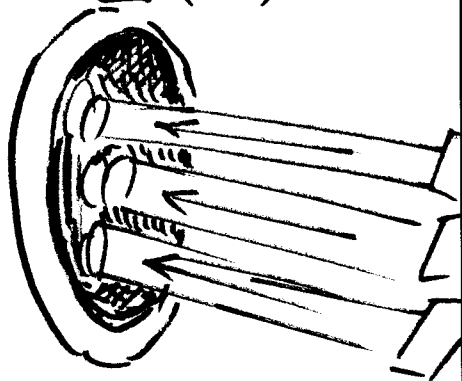
60

光をさえぎる



64

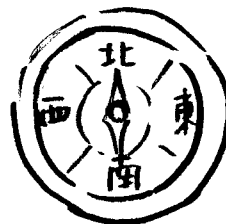
まど当(・)て



65

ほういじしん

方位を調べるコンパス



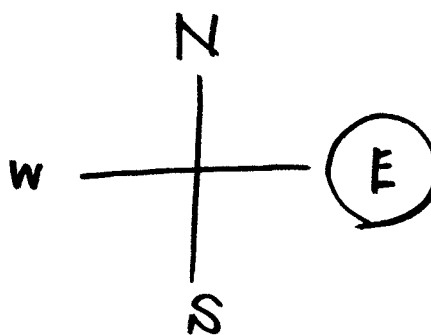
69

かげ (影)



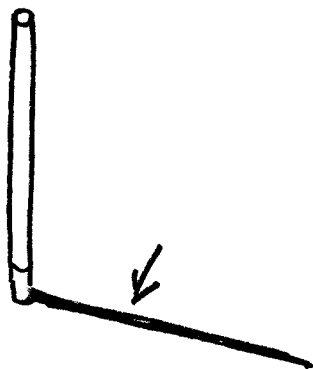
66

東 (.....)



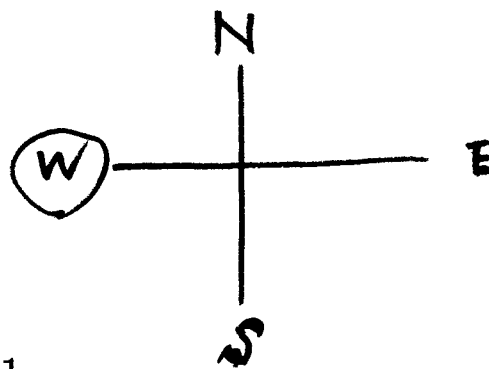
70

いち (位置)



67

西 (...)



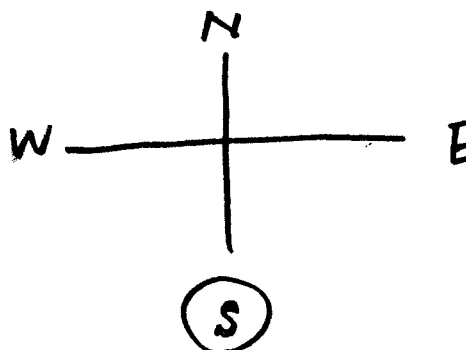
71

はんたいがわ



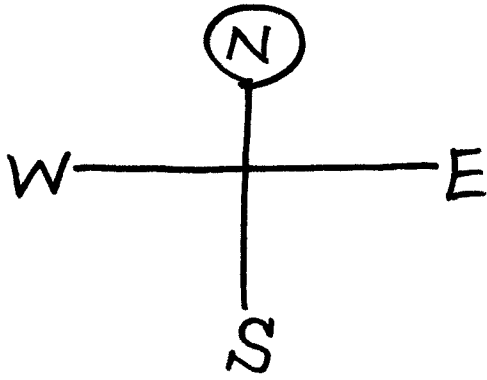
68

南 (.....)



72

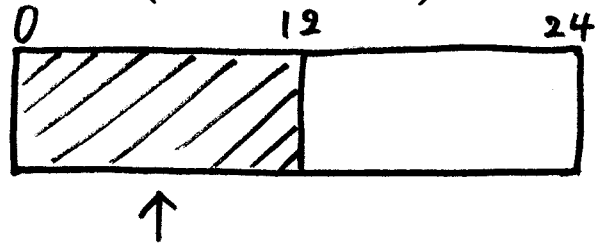
北 (...)



73

午前

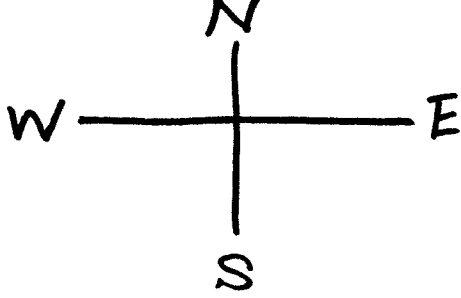
(. . .)



77

東西南北

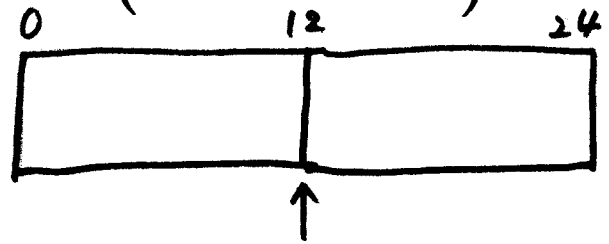
(.)



74

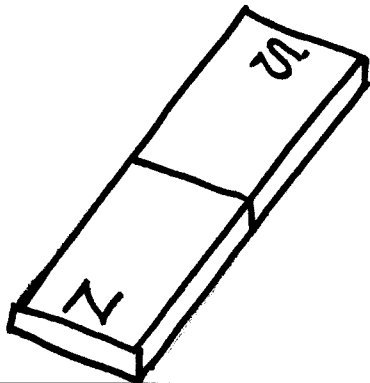
正午

(. . . .)



78

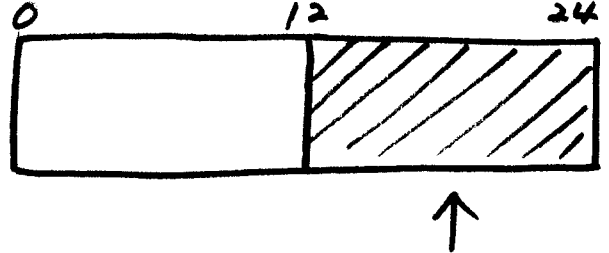
じしやく



75

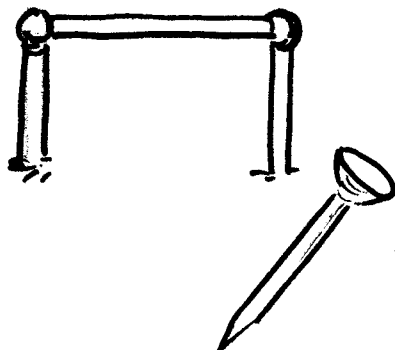
午後

(. . .)



79

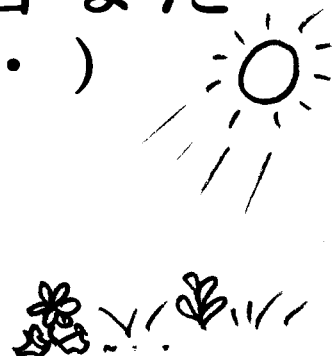
てつ (鉄)



76

日なた

(.)



80