



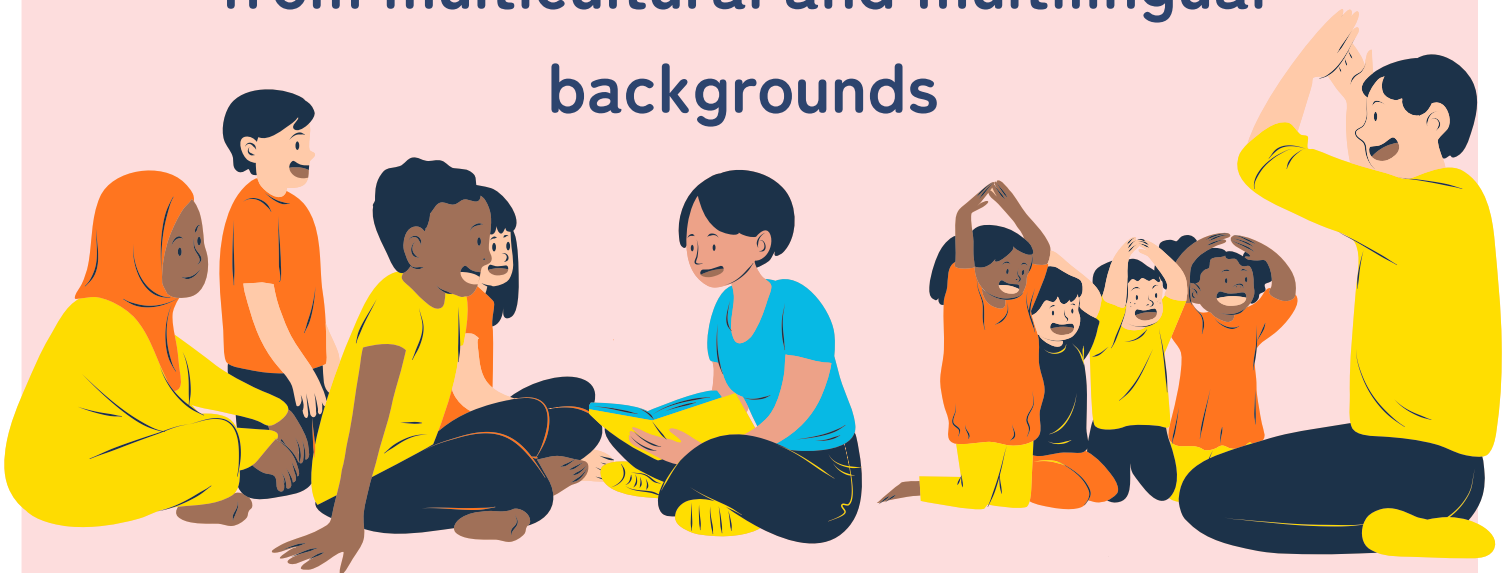
兵庫県マスコットはばタン

Hyogo  
Prefecture

To parents/guardians of children aged 10-15 (from  
year 5 of elementary to year 3 of junior high school)  
from multicultural and multilingual backgrounds

—Online Questionnaire—

Please participate in a survey on Japanese  
language learning and daily life of children  
from multicultural and multilingual  
backgrounds



This survey is being conducted to help Hyogo Prefecture think about how to better support children and their parents/guardians from multicultural and multilingual backgrounds. We kindly ask for your cooperation.

Share your voice for  
better support!

Survey Period /



2026年 7月13日 ~ 9月30日

Survey Organizers: Hyogo Prefecture, Hyogo International Association



Hyogo Prefecture Community-based Japanese Language Education Enhancement Program 2026

The survey is anonymous.

Your answers will not be shared with anyone.  
Please answer with confidence.



## Questionnaire for Parents/Guardians



日本語



にほんご  
(ひらがな)



English



tiếng việt



中文简体



中文繁体



नेपाली



português



español



Filipino



한국어



／ For those with a child aged 10-15 \  
(from year 5 of elementary to  
year 3 of junior high school)

↓ We hope your child can take part as well!

## Questionnaire for Students



日本語



にほんご  
(ひらがな)



English



tiếng việt



中文简体



中文繁体



नेपाली



português



español



Filipino



한국어



／ For those aged 10-15 (from year 5 of elementary to year 3 of junior high school) \<