



**ABELHA**  
abelha

22-1



**ÁCARO**  
ácaro

22-2



**BESOIRO**  
besouro

22-3



**BORBOLETA**  
borboleta

22-4



**CARACOL**  
caracol

22-5



**CIGARRA**  
cigarra

22-6



**FORMIGA**  
formiga

22-7



**GAFANHOTO**  
gafanhoto

22-8



**JOANINHA**  
joaninha

22-9



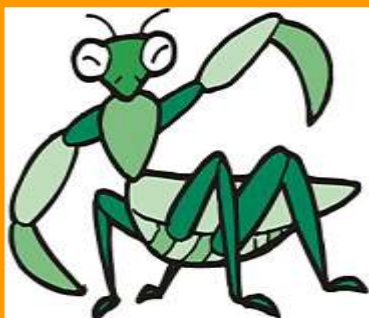
**LAGARTA**  
lagarta

22-10



**LIBÉLULA**  
libélula

22-11



**LOUVA-A-DEUS**  
louva-a-deus

22-12



**MOSCA**  
mosca

22-13



**MOSQUITO**  
mosquito

22-14



**PULGA**  
pulga

22-15



**VACA-LOIRA**  
vaca-loira

22-16



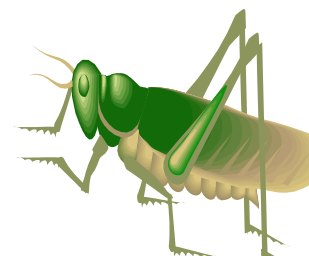
**VAGALUME**  
vagalume

22-17



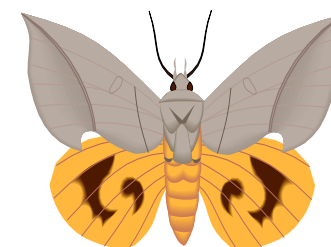
**BARATA**  
barata

22-18



**GRILO**  
grilo

22-19



**MARIPOSA**  
mariposa

22-20